

Overview of the Danish agricultural advisory system

EURAGRI

Foulum, Denmark

19 September 2008

Director Carl Aage Pedersen



Farmers' demand for advisory services

Farmers of today are:

Farm managers

Raw material producers

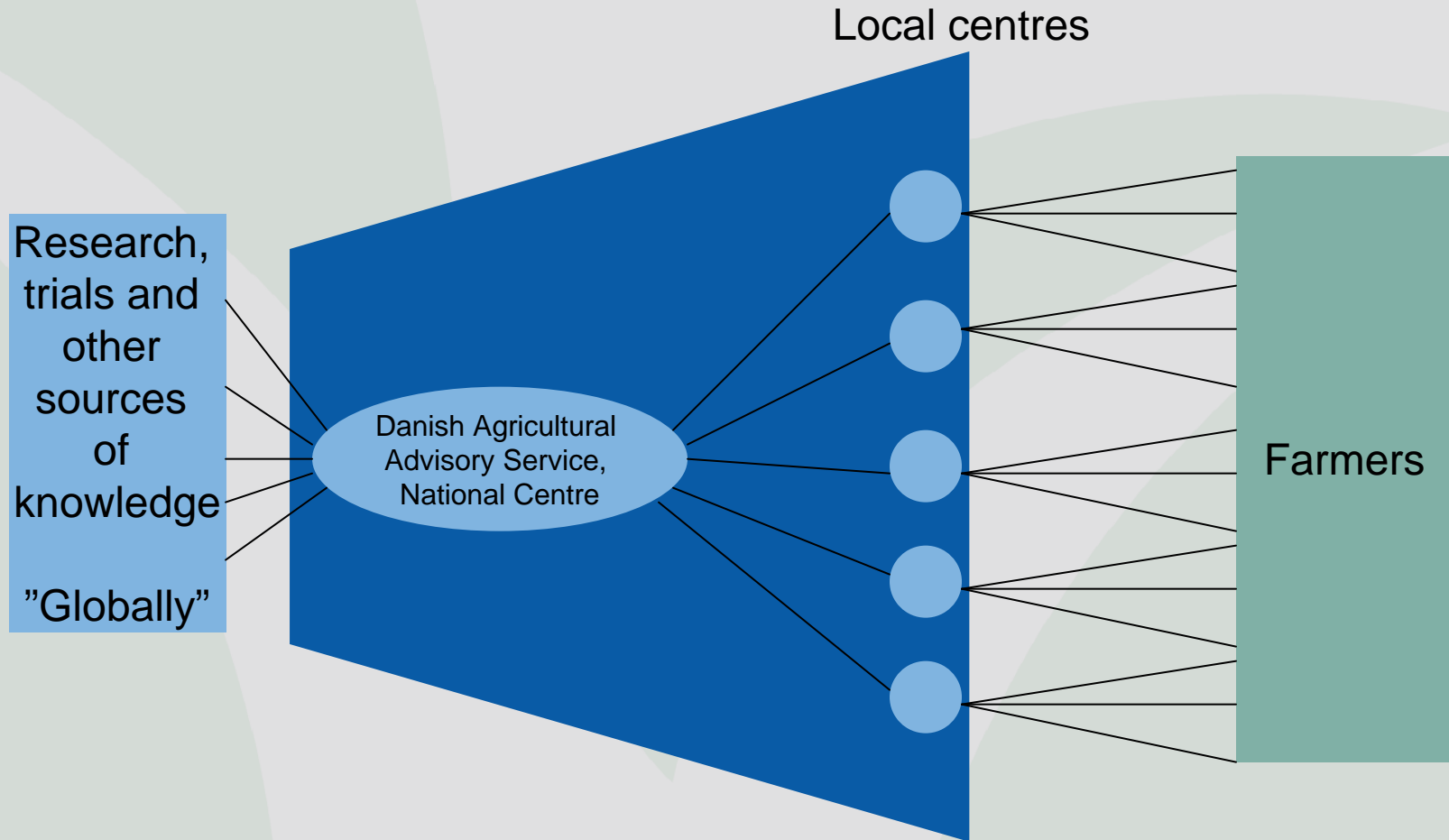
Nature managers

Livestock keepers

Employers



Danish Agricultural Advisory Service



Danish Agricultural Advisory Service



Danish Agricultural Advisory Service

- 38 local agricultural advisory centres and 1 national centre
- Turnover: DKK 1.8 billion
- 3½ thousand employees
- Denmark's largest consultancy




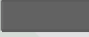

Advice, services and development

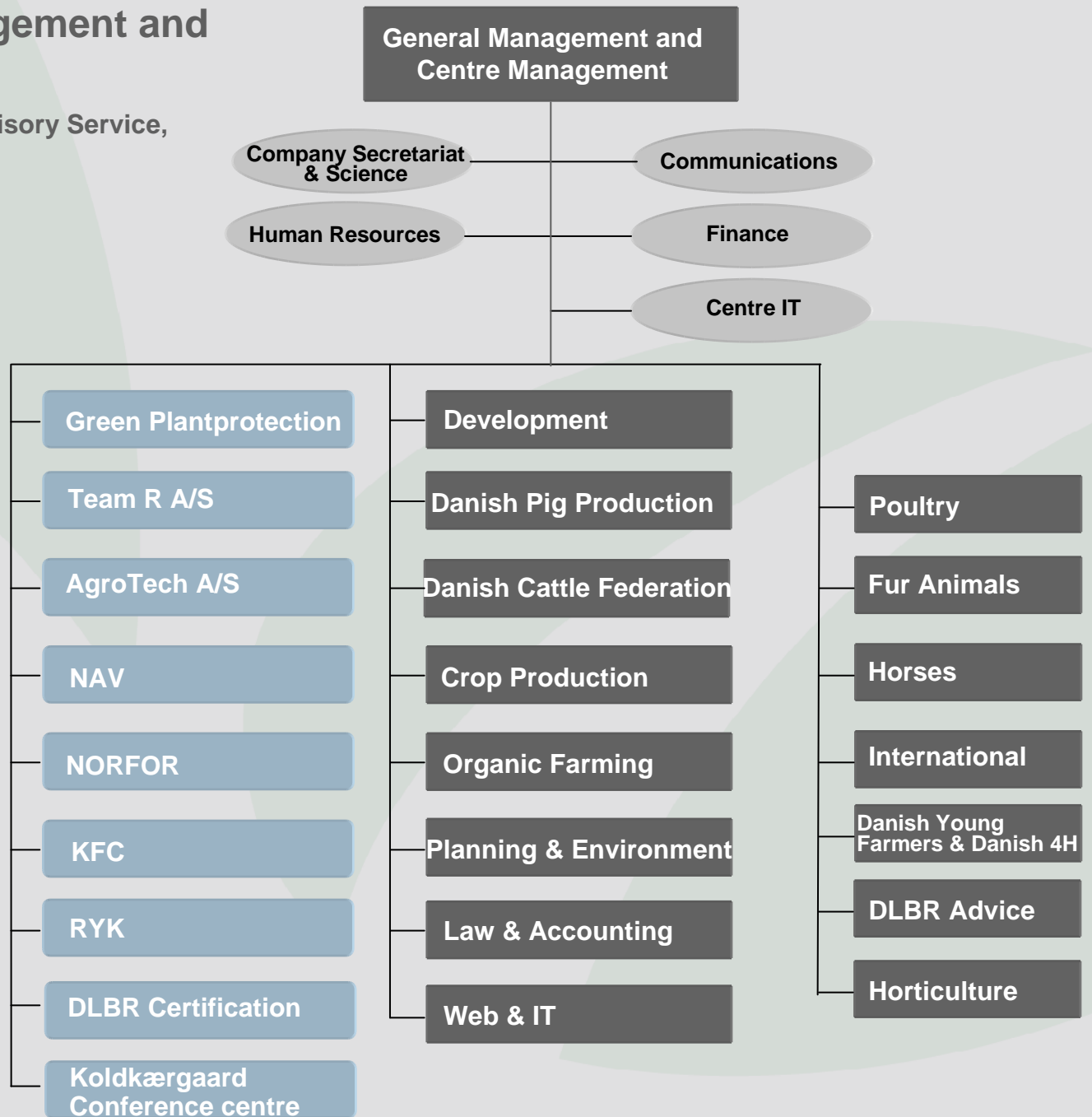
- Advice on: Crop production, economics, pig production, etc.
- Services on: Accounting matters, registration, applications, etc.
- Management, recruitment and logistics
- Research, trials and studies
- Documentation and quality management
- Advice on projects, project manager, and project support
- ...



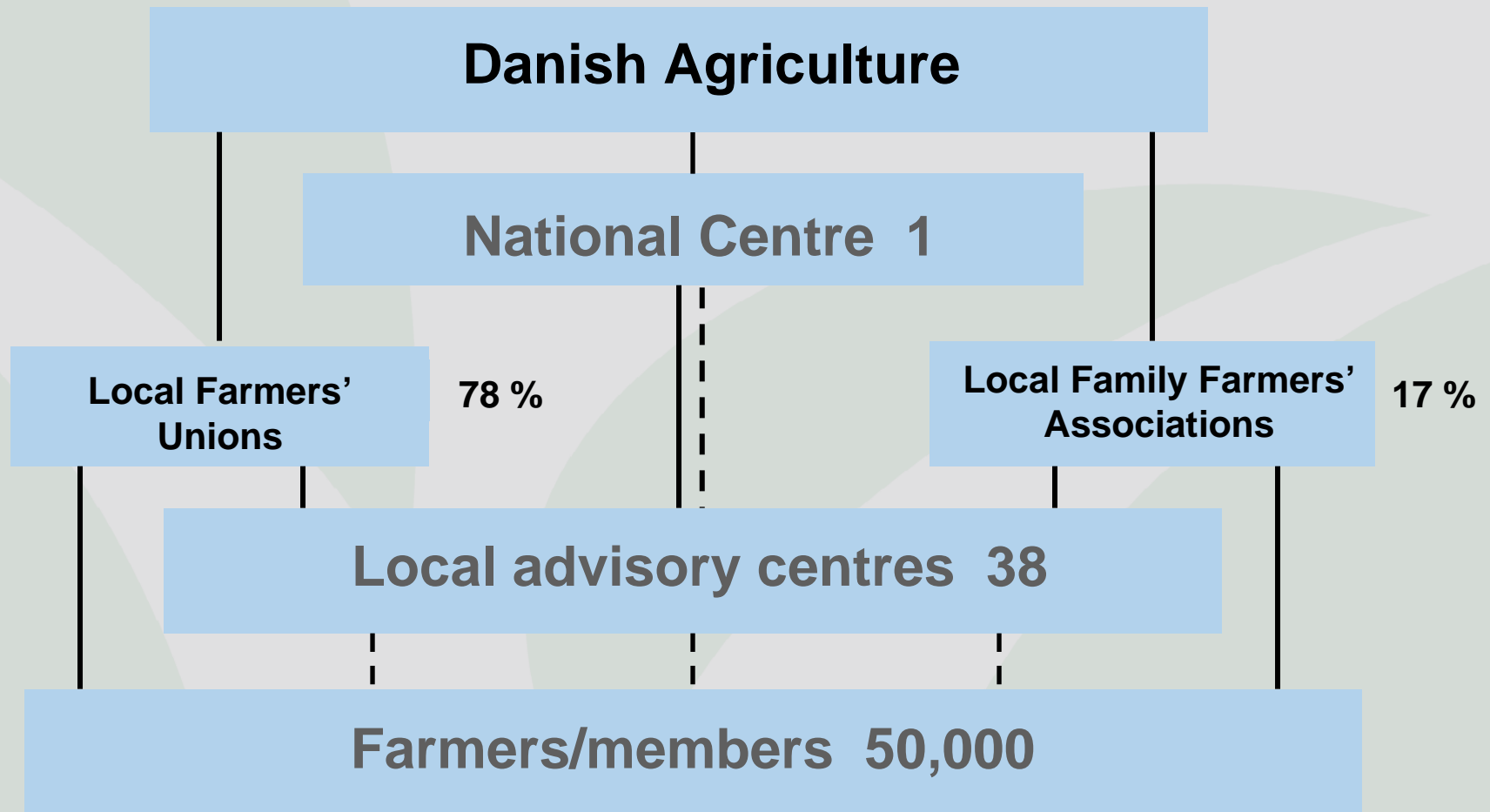
Day-to-Day Management and organisation

Danish Agricultural Advisory Service,
National Centre

-  Staff functions
-  Head departments and departments with direct advisory service
-  Business Fields



Danish Agricultural Advisory Service



— Organising and/or administrative connection

- - - - - Advice and Information flow

Elected management of the National Centre

The National Centre's Board of Directors

Co-ordination Council

Danish Cattle Federation

National Committee on Fur Animals

Danish Pig Production

Danish Poultry Council

National Committee on Crop Production

National Committee on Horses

Horticultural Committee

Organic Farming Users' Committee

Partnership Council

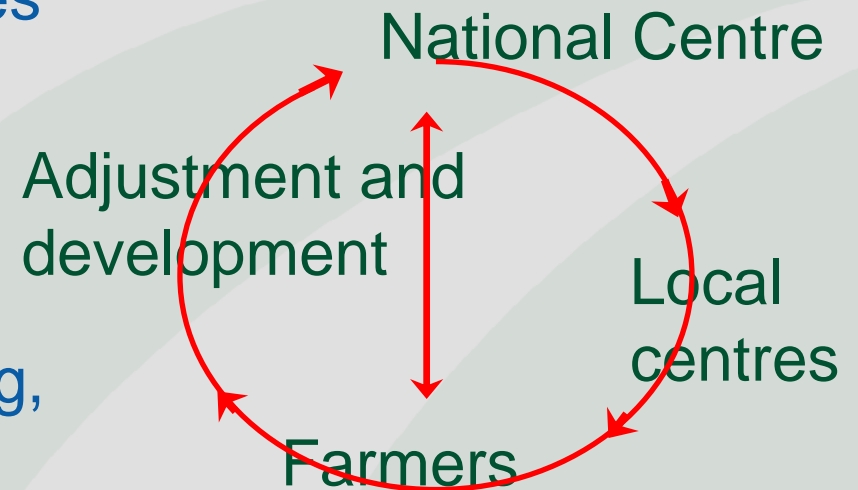
Liaison Committee of Danish Young Farmers and Danish 4H

The Special Committee on Danish Young Farmers and Danish 4H



Tasks of the National Centre

- Specialised advisory services
- Knowledge and information dissemination
- Development activities
- Trials and studies
- Education, in-service training, and courses
- Operational and service tasks



Relations between DAAS and farmers

Farmers are:

Owners

Users

Customers

Key words:

Best and cheapest advisory services

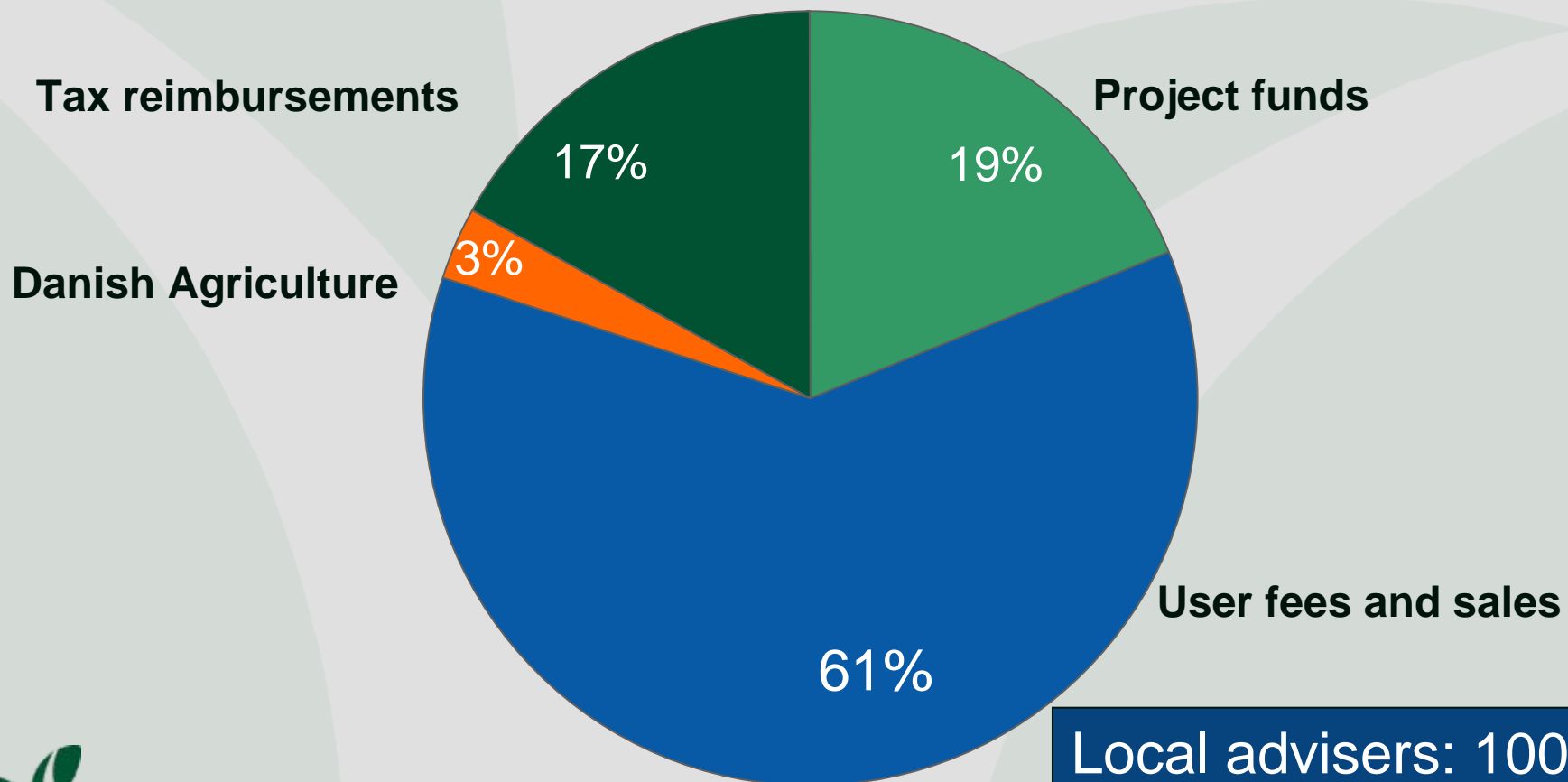
Impartialness

Non-profit



Distribution of income, National Centre, 2008

**Total income:
DKK 525 mill**



**Local advisers: 100
per cent user fees.**

Tasks of the National Centre

Dissemination of Knowledge

LandbrugsInfo

105,000 documents

27,000 page references per day

55,000 visitors per week

50 interactive programs

plant protection

calculation of animal units and area requirement

weather forecast and weather radar via sms

2,3 mill. people visit LandbrugsInfo and Landmand.dk every year



Log ind

Carl Åge Pedersen

Log ud

Ændre Kodeord

Mine links

- Tilføj nyt hyperlink

Afgrøde sortsvalg

- Budgetkalkuler
- SortInfo - alle
- SortsValg

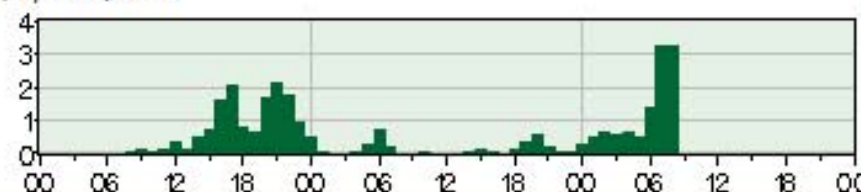
Planteværn

- Skadedyr problemløsning
- Sygdomme - billeder
- Sygdomme problemløsning
- Ukrudt problemløsning
- Ukrudtsnøgle

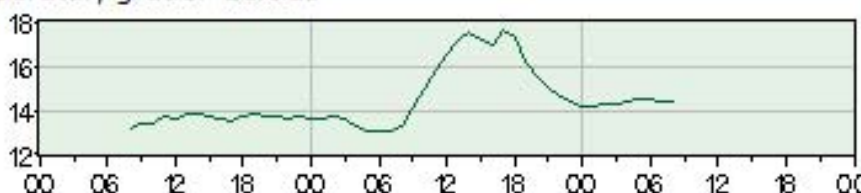
2 døgns prognose

Prognose beregnet 04-09-2008 for Århus

Nedbør, mm/time



Temperatur, grader Celcius



Vindhastighed, m/s



Læs mere på www.planteinfo.dk

Dagens Vejr

Østjylland

I dag | Fredag | Lørdag | Søndag | Mandag | Tirsdag

Jordtemperatur DK

Jordtemperatur 03.09



Plantefno

Læs mere på www.planteinfo.dk

Landbrugsnyt Indland

- Svinenoteringen går 20 øre op (03:05)
- Mangel på økomælk i Europa (02:49)
- Bornholm sælger landbrugsjord (02:22)
- Aabenraa jagter ideer (01:59)
- Bornholmske landmænd har bierhverv (01:46)

Dagens nyheder

FØJO

Tasks of the National Centre

Development work

Mutually binding advisory services

PDA Pig (PDA program)

EasyCow (PDA program)

Benchmarking

Quality management
and documentation

GPS and
robot technology

Breeding
development, cattle



IT-løsninger - fra Dansk Landbrugsrådgivning

Software skabt til vækst

Med programmerne i DLBR IT får du de bedste betingelser for hurtigt at tage den nyeste landbrugsfaglige viden i brug på din bedrift. Det giver dig gode muligheder for at optimere din produktion og økonomi.



DLBR PlantelIT

- programmer til
professionel styring af
planteavl

[Læs mere >>](#)



DLBR KvægIT

- programmer til
professionel styring
kvægbruget

[Læs mere >>](#)



Danish Agricultural Advisory Service
National Centre

Tasks of the National Centre

Trials and studies

National Field Trials

FarmTest

Project farms



Why on-farm field trials?

- Pesticides, varieties, and strategies are tested in "real life"
- They generate results that are directly distributed to the farmers and immediately implemented by the farmers
- They provide "the missing link" between research and farmer



Research and field trials

Agricultural University
(Royal Vet. and Ag. Uni.)



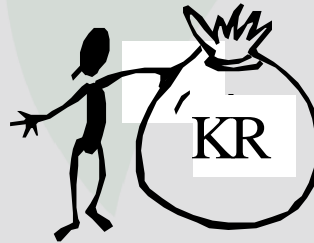
Sector Research
(DIAS, Risø)



Screening of pesticides



Local field trials
(National field trials)



Basic research

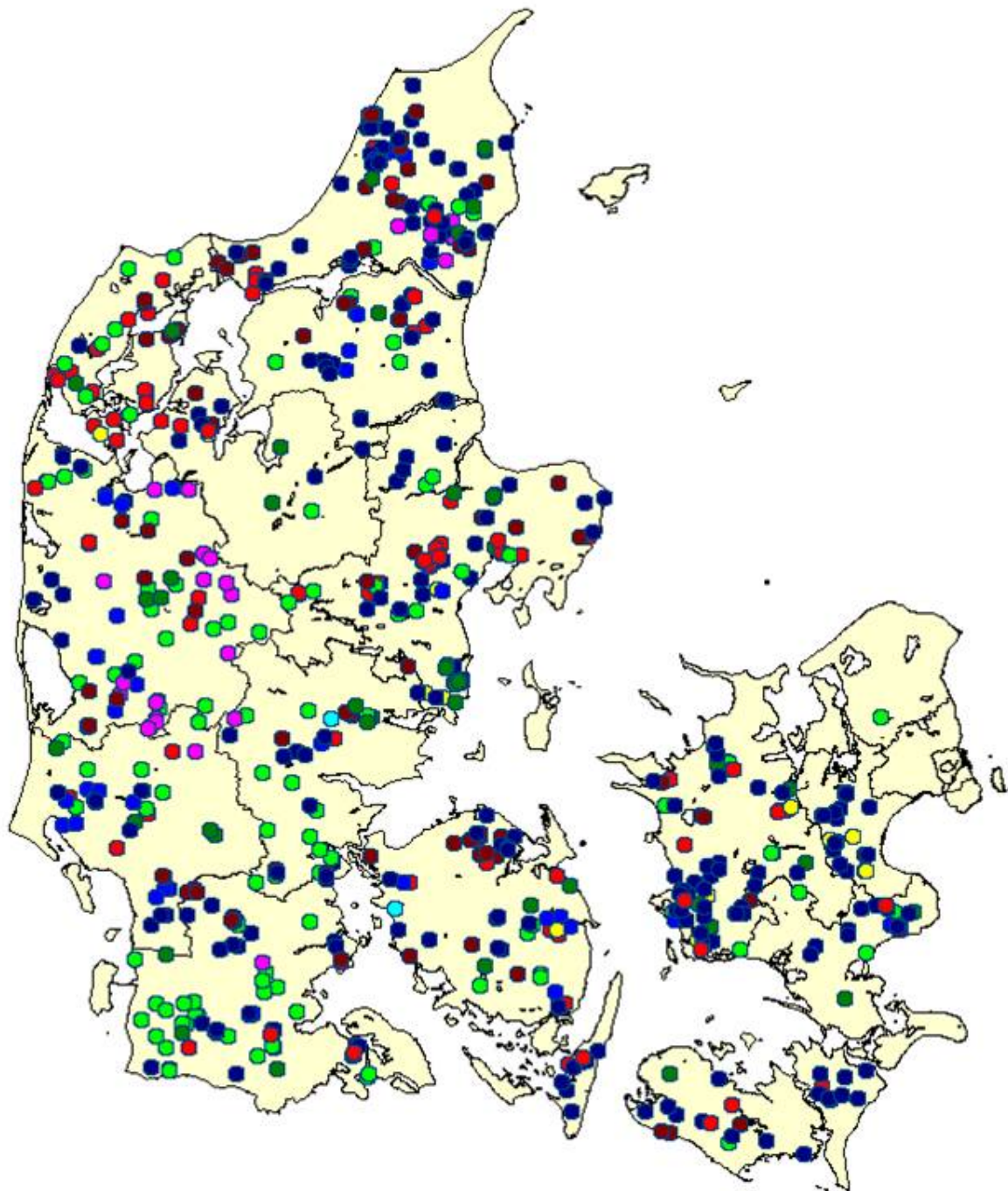


Applied research



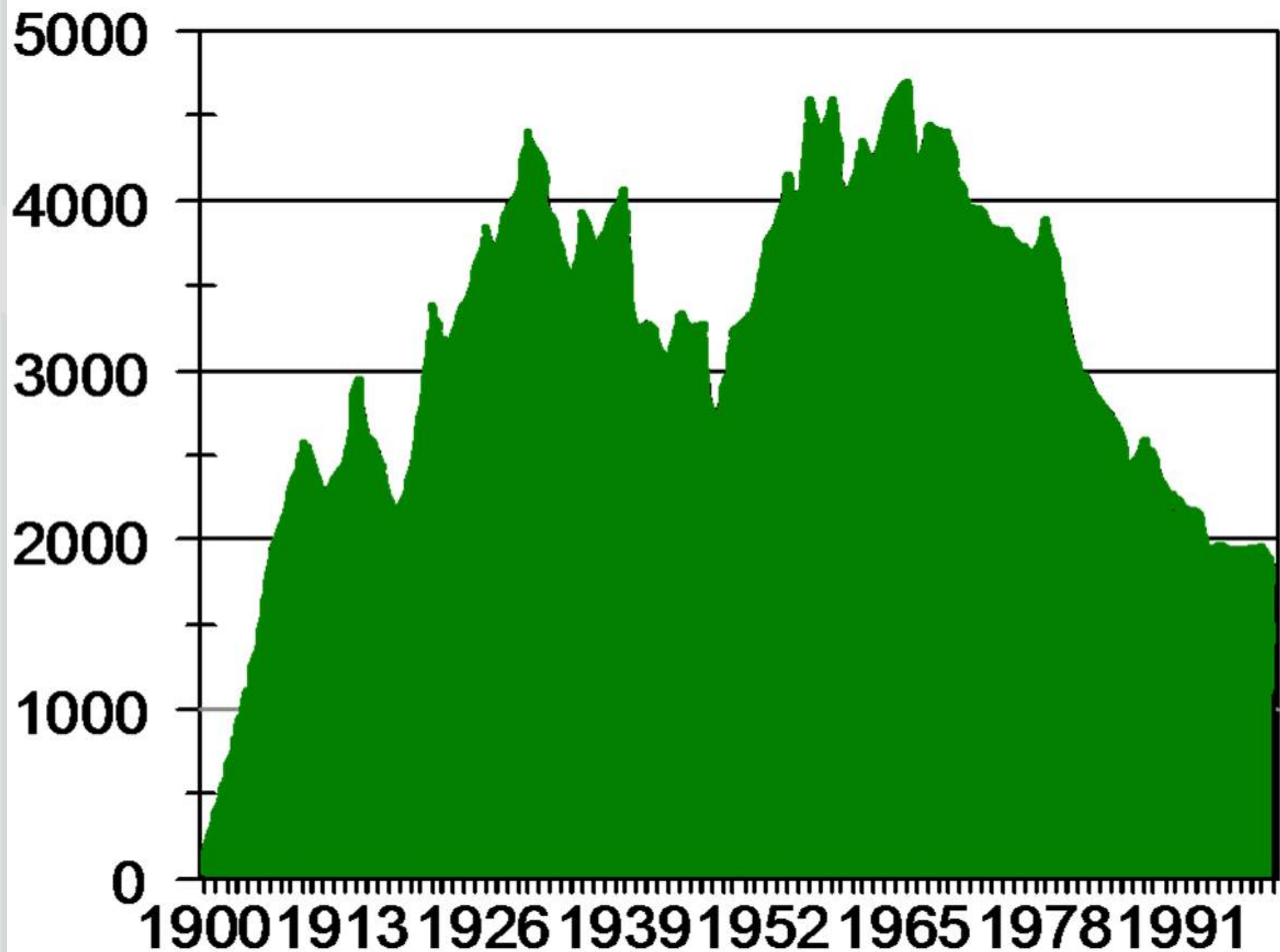
Farmers





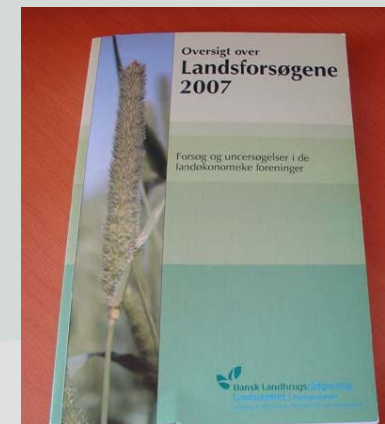
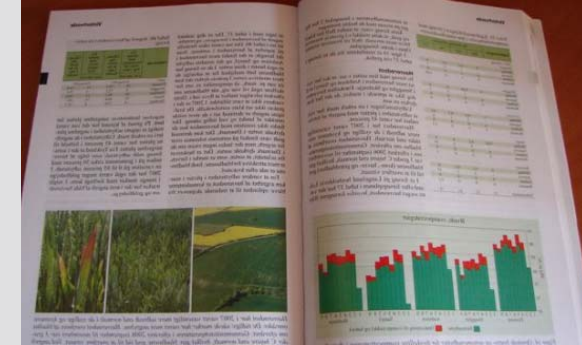
Forsøg - 2003
Landsforsøg

● Korn og bælgssæd	(265)
● Økologi	(233)
● Grovfoder	(86)
● Kartofler	(56)
● Frø- og industriafgrøder	(56)
● Undersøgelser og test	(12)
● Gødskning	(144)
● Jordbehandling	(53)
● Plantebeskyttelse	(313)



Results and reporting

- Single trial results are published currently in LandbrugsInfo (updated within minutes after data reception).
- Results from variety trials are presented in [SortInfo](#)
- Series results are published when all single trial results have been validated
- The annual report is published in December



SortInfo

Vælg afgrøde:

Oversigt for vinterhvede (sorter i Landsforsøg 2008, nyeste data)

	Udbytteforsøg 1)	Målte dyrkningsegenskaber (Fra udbytteforsøg 1)			Sygdomme (Observationspa				
		Kerneudb. forholdstal	Råprotein i ts.	Stivelse, pct. af tørstof	Hekto-litervægt	Meldug dækning	Septoria dækning	Gulrust dækning	Brun dækning
		(fht)	(%)	(%)	(kg/hl)	(%)	(%)	(%)	(%)
Ar									
	2008	2008	2008	2008	2008	2008	2008	2008	2008
<input checked="" type="radio"/> Sortering	<input type="radio"/>	<input type="radio"/>	<input type="radio"/>	<input type="radio"/>	<input type="radio"/>	<input type="radio"/>	<input type="radio"/>	<input type="radio"/>	<input type="radio"/>
1. 7249.12	104 (9)	9,7 (8)	71,3 (8)	77,7 (8)	3,3 (5)	2,3 (3)	0,07 (8)	0,05	
2. 7249.13	102 (9)	10,0 (8)	70,9 (8)	78,3 (8)	1,3 (5)	0,5 (3)	0,01 (8)	0,2	
3. Alfa	100 (9)	10,0 (8)	70,2 (8)	77,5 (8)	2,0 (5)	1,0 (3)	0,3 (8)	0,03	
4. Ambition	102 (9)	9,9 (8)	70,9 (8)	78,2 (8)	3,2 (5)	1,7 (3)	0,2 (8)	0,03	
5. Ararat	98 (9)	9,5 (8)	70,9 (8)	78,7 (8)	0,6 (5)	10 (3)	1,0 (8)	0	

Why field trials?

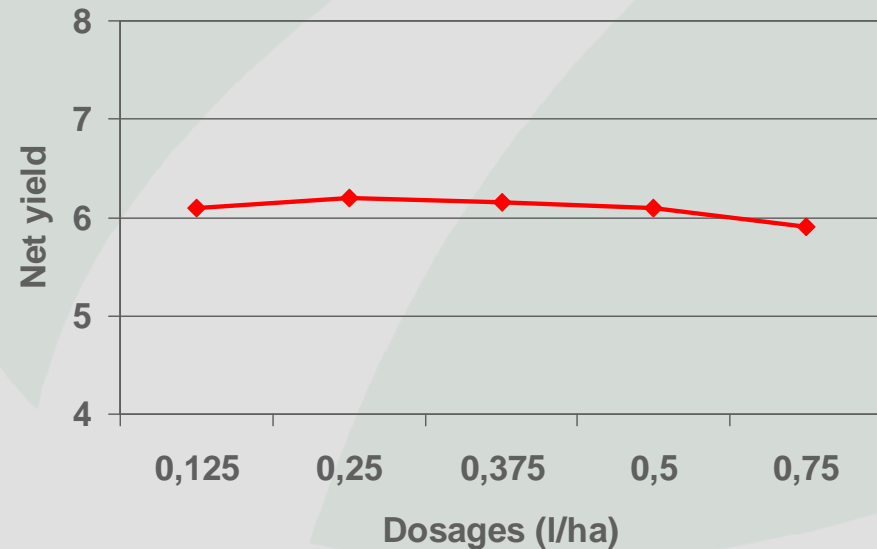
- Impartial field trials are the only way to obtain knowledge on varieties, pesticides and dosages

Chemical company:

Opera
(fungizide)

Winter wheat:
1 l/ha

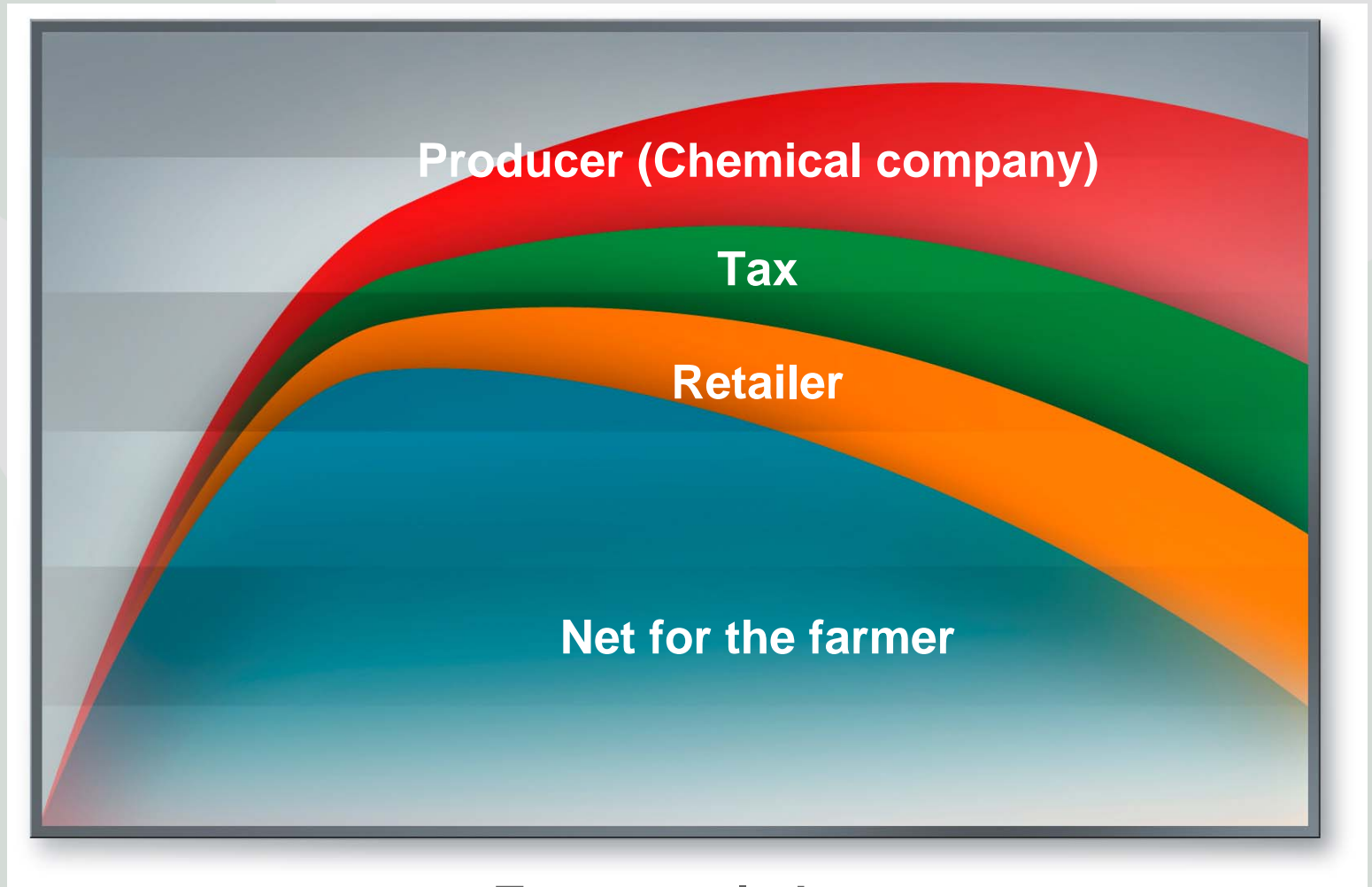
11 field trials:



A theoretical example

Who is having the benefit of spraying?

DKK
per ha



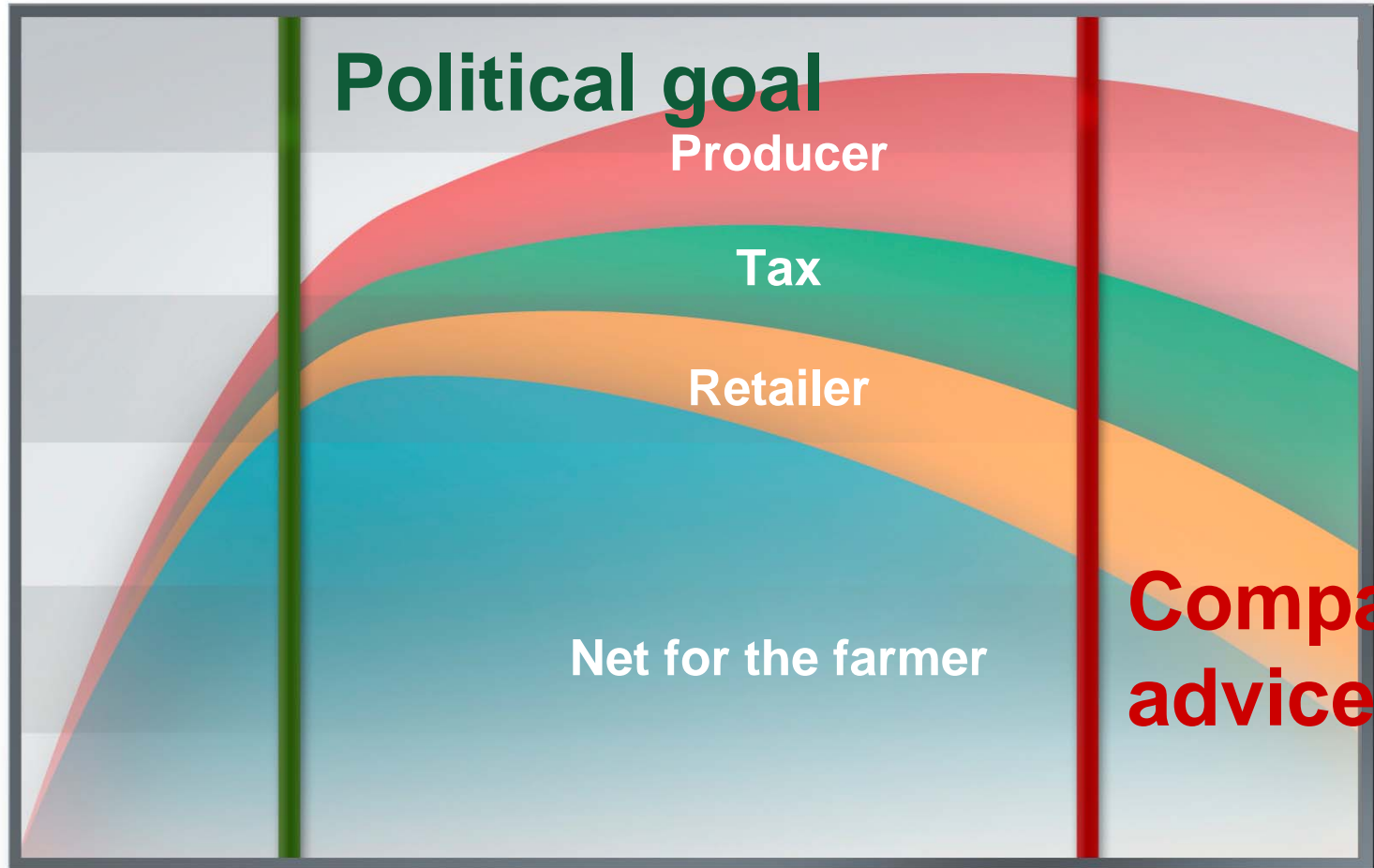
Treatment Index



A theoretical example

Who is having the benefit of spraying?

DKK
per ha



1,55

Treatment Index



Tasks of the National Centre

Operational and service tasks

Livestock registration

Accounting system Ø90

INTEGRATED OFFICE
MANAGEMENT SYSTEM

Stud book keeping

Potato inspection



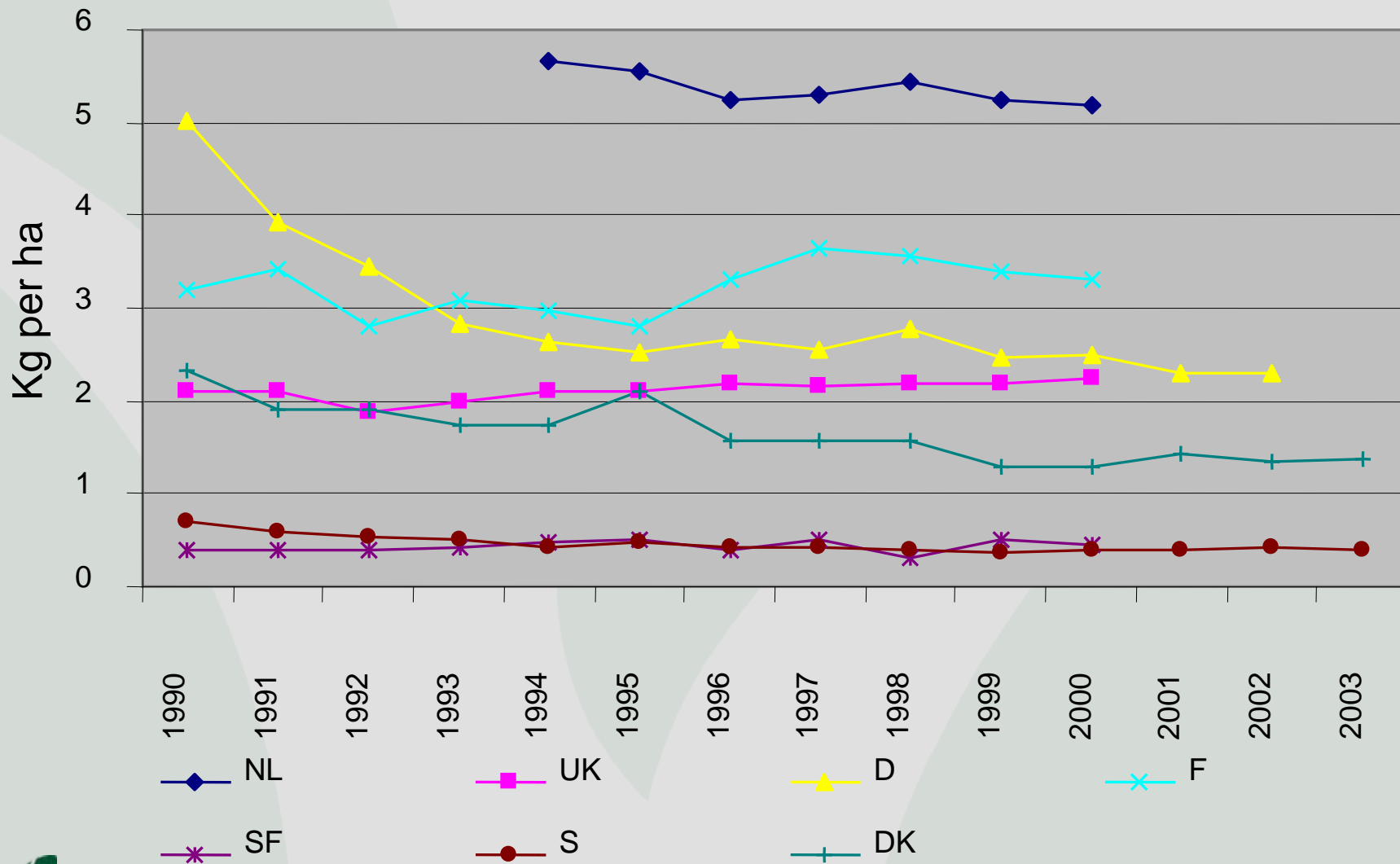
Tasks of the National Centre

Education and in-service training

The academy of education
Farmer education
In-service training of farmers



Pesticide use, kg a.i. per ha





AGWAPLAN



Cleaner water through improved agricultural practice

agwaplan



[Pilot areas](#)

[Description of project](#)

[Folders](#)

[Newsletters](#)

[Photos](#)

[Posters](#)

[Presentations](#)

[Reports and other materials](#)

The aim of the project is to facilitate the practical implementation of the EU Water Framework Directive (WFD) at farm level as well as at catchments level.

A key issue for the project is "cooperation between the agricultural and the environmental sector" in order to get improved results for the environment as well as for the agricultural sector.

Three pilot areas participate in the project. They are all farmed intensively, and seen from an environmental point of view they have critical levels of N and P in either surface or groundwater.

By using the best available farm and

production in a way which is in consistence with his wishes for farming and in consistence with the surrounding environment.



NJF Seminar

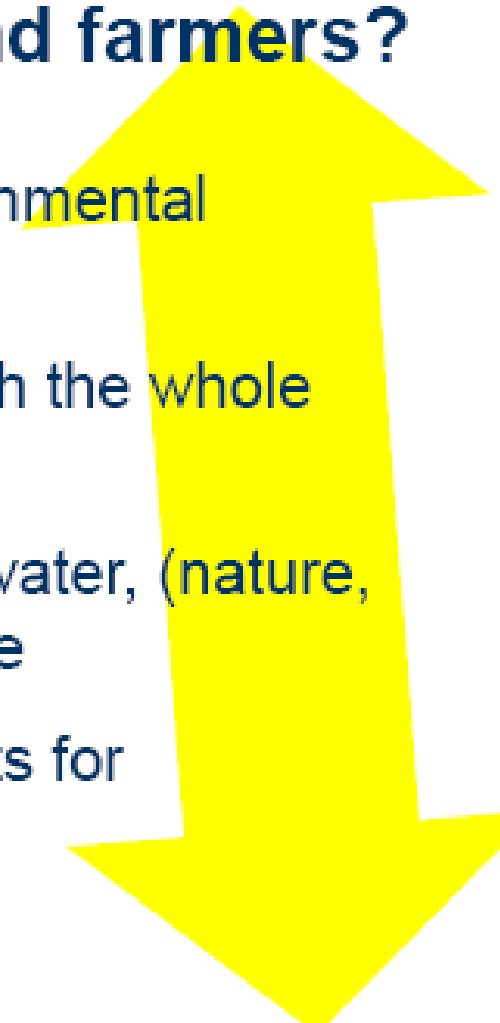
NJF seminar
Uppsala, Sweden -
22nd-23rd September
2008





How can we achieve good environmental status with success for society and farmers?

- The farmer need to understand the environmental challenge for the farm
- Involve the farmers from day 1 and through the whole process
- Use a holistic process where production, water, (nature, air and soil) are dealt with at the same time
- Co-operation creates cost effective benefits for environment



Conclusions

- An impartial advisory system in close contact with the farmer can
 - Implement optimal solutions both for the farmer and the society
 - As long as it is concordant with good agricultural practice
- Which is the case within reasonable mandatory limits. E.g. maximum livestock density.



**Thank you very much for your
attention!**

